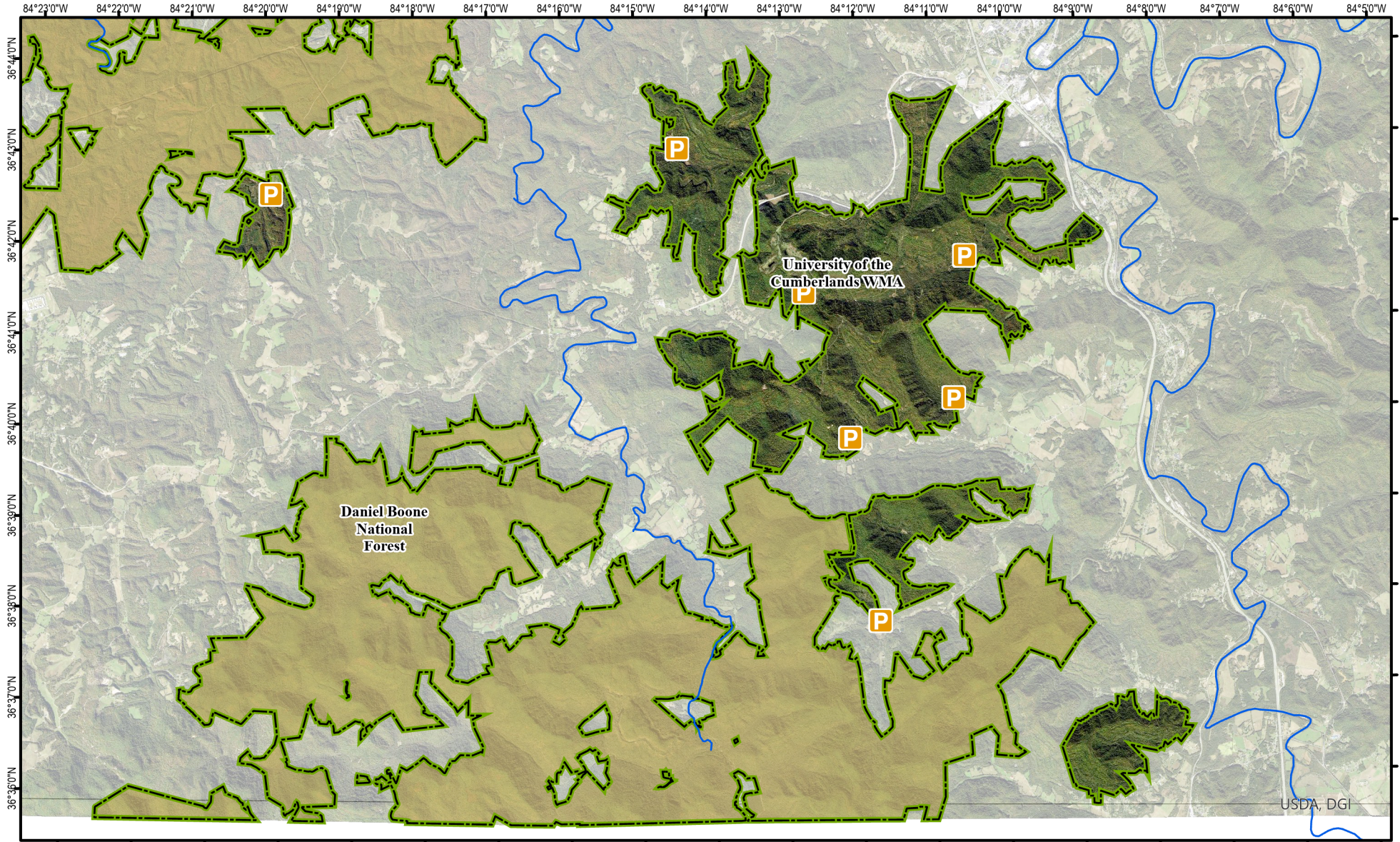
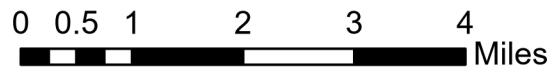


# University of the Cumberlands WMA



A map legend and additional information are provided on PDF pages that accompany this map.

Publication Date: 9/1/2023  
Imagery from Farm Service Agency 2018



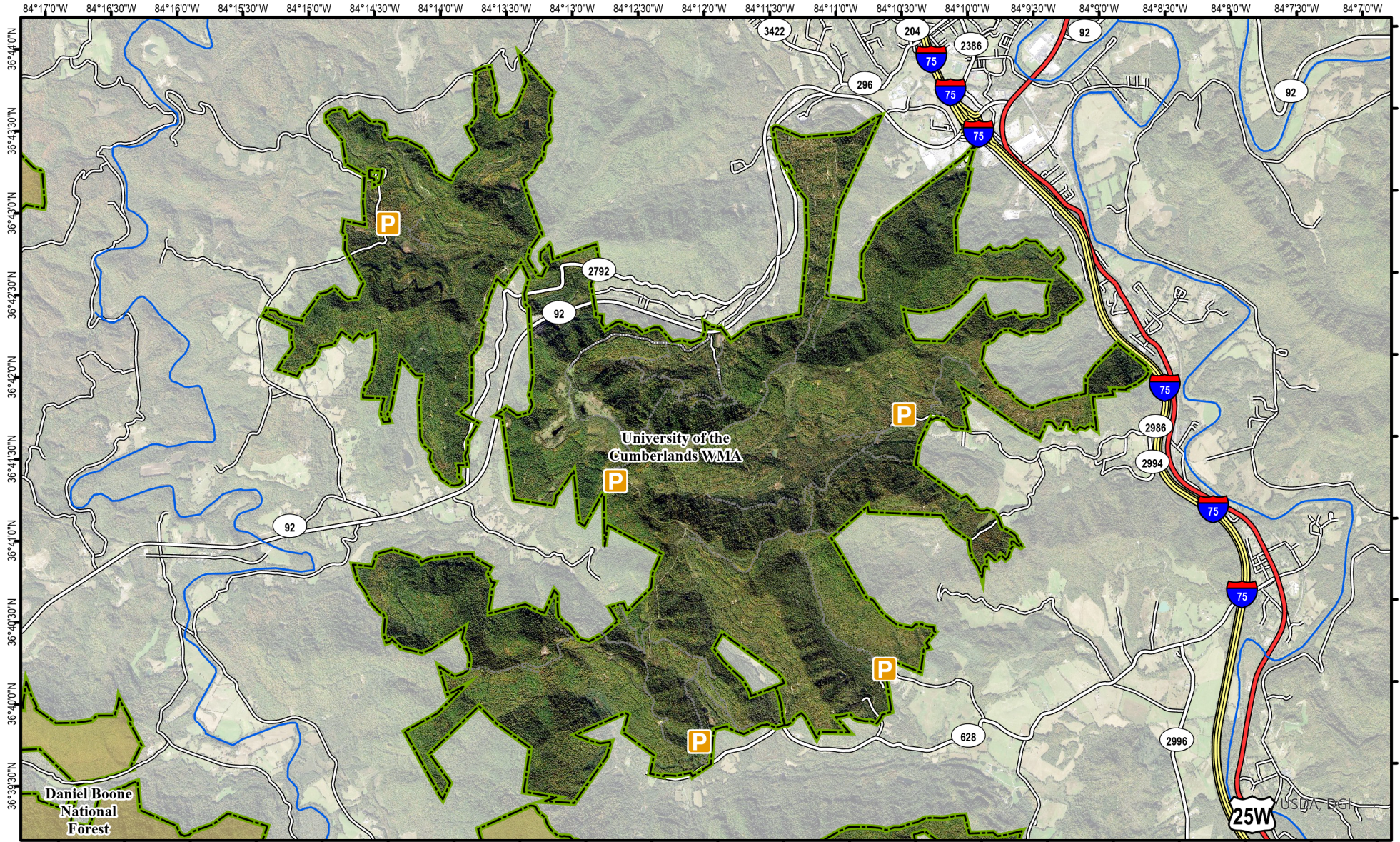
Scale 1:109,488

\*Shading indicates topography

### Note to Map Users

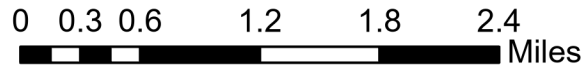
Map prepared by Kentucky Department of Fish & Wildlife Resources (KDFWR). Although KDFWR strives for accuracy, data used to create this map are from a variety of sources and dates; as such, KDFWR makes no representations regarding the accuracy or fitness for use of the information furnished herein.

# University of the Cumberlands WMA Tract 1



A map legend and additional information are provided on PDF pages that accompany this map.

Publication Date: 9/1/2023  
Imagery from Farm Service Agency 2018



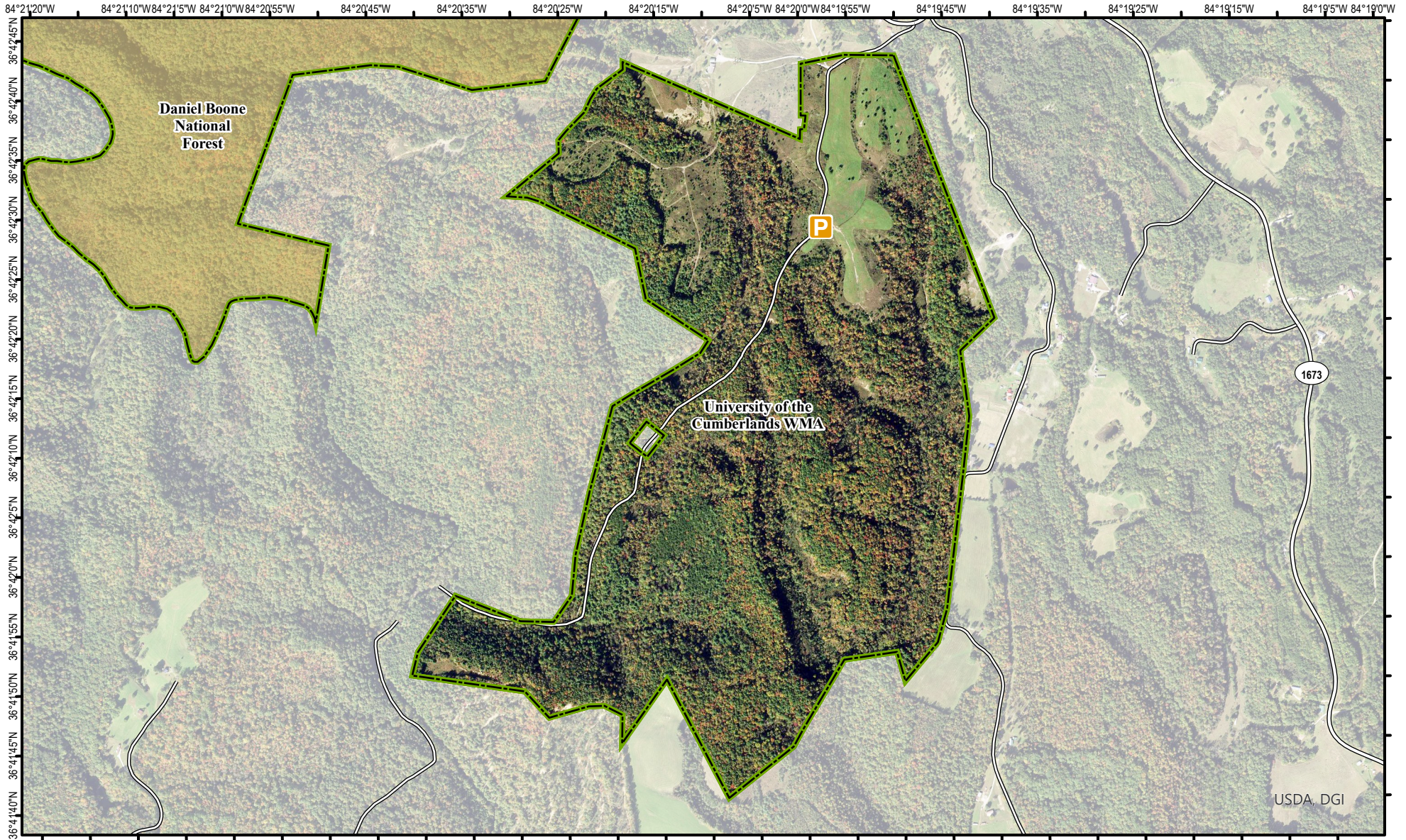
Scale 1:61,004

\*Shading indicates topography

### Note to Map Users

Map prepared by Kentucky Department of Fish & Wildlife Resources (KDFWR). Although KDFWR strives for accuracy, data used to create this map are from a variety of sources and dates; as such, KDFWR makes no representations regarding the accuracy or fitness for use of the information furnished herein.

# University of the Cumberlands WMA Tract 2

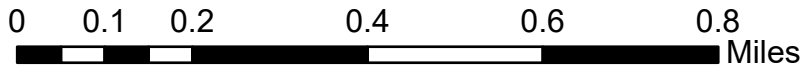
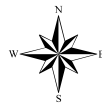


USDA, DGI

\*Shading indicates topography

A map legend and additional information are provided on PDF pages that accompany this map.

Publication Date: 9/1/2023  
Imagery from Farm Service Agency 2018



Scale 1:13,882

**Note to Map Users**  
Map prepared by Kentucky Department of Fish & Wildlife Resources (KDFWR). Although KDFWR strives for accuracy, data used to create this map are from a variety of sources and dates; as such, KDFWR makes no representations regarding the accuracy or fitness for use of the information furnished herein.

# University of the Cumberlands WMA Tract 3



84°12'50"W 84°12'40"W 84°12'30"W 84°12'20"W 84°12'10"W 84°12'0"W 84°11'50"W 84°11'40"W 84°11'30"W 84°11'20"W 84°11'10"W 84°11'0"W 84°10'50"W 84°10'40"W 84°10'30"W 84°10'20"W 84°10'10"W 84°10'0"W 84°9'50"W 84°9'40"W 84°9'30"W 84°9'20"W

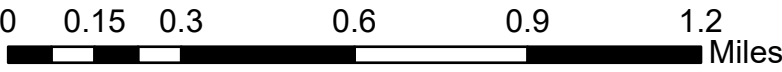


USDA, DGI

\*Shading indicates topography

A map legend and additional information are provided on PDF pages that accompany this map.

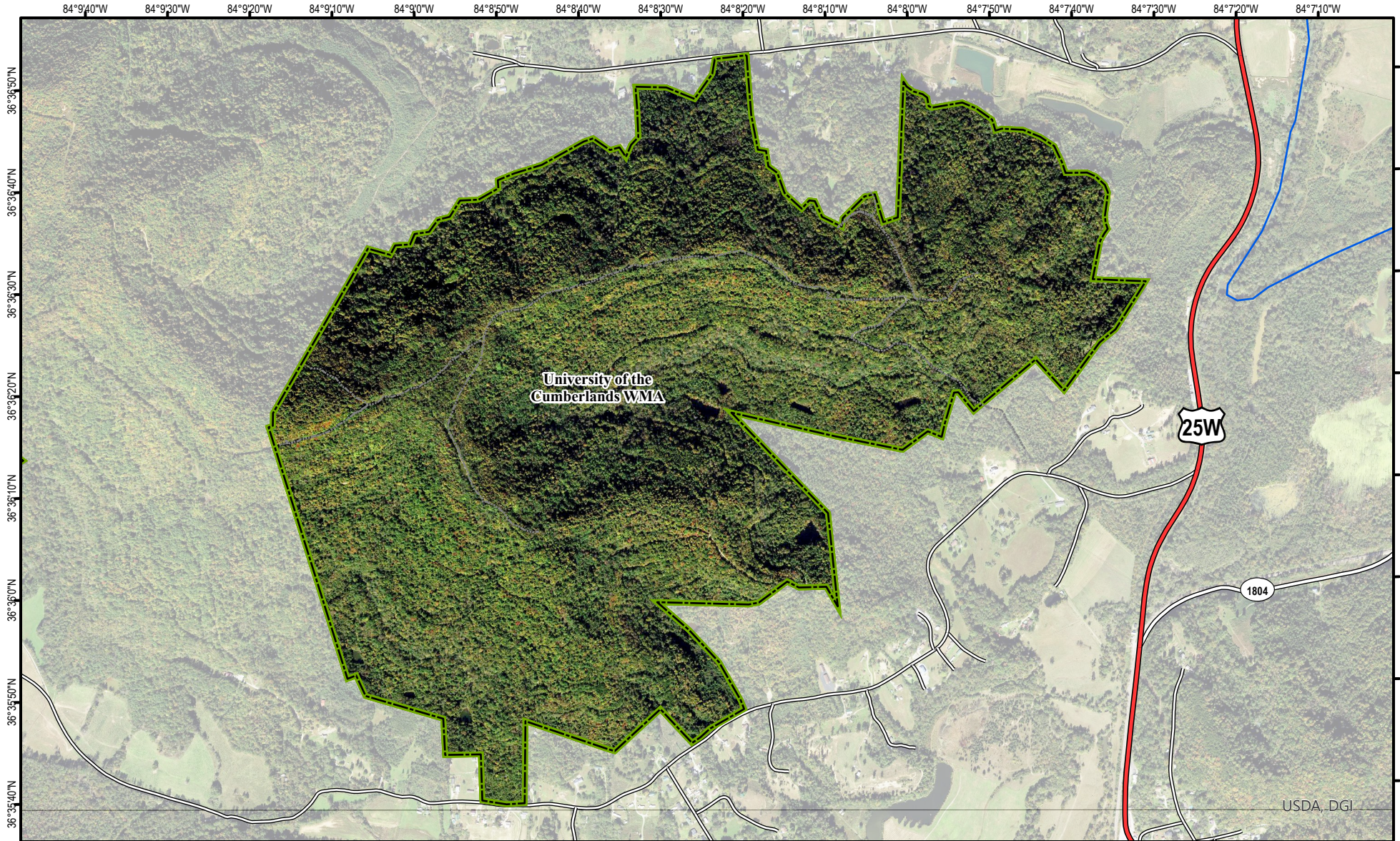
Publication Date: 9/1/2023  
Imagery from Farm Service Agency 2018



Scale 1:21,072

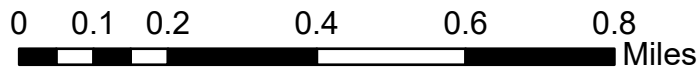
**Note to Map Users**  
Map prepared by Kentucky Department of Fish & Wildlife Resources (KDFWR). Although KDFWR strives for accuracy, data used to create this map are from a variety of sources and dates; as such, KDFWR makes no representations regarding the accuracy or fitness for use of the information furnished herein.

# University of the Cumberlands WMA Tract 4



A map legend and additional information are provided on PDF pages that accompany this map.

Publication Date: 9/1/2023  
Imagery from Farm Service Agency 2018



Scale 1:16,346

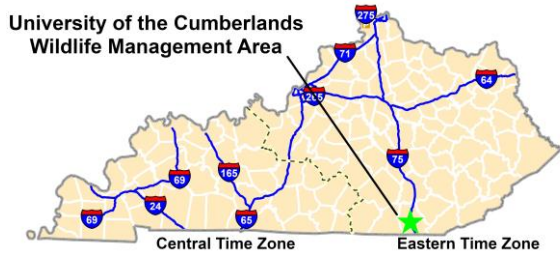
\*Shading indicates topography

### Note to Map Users

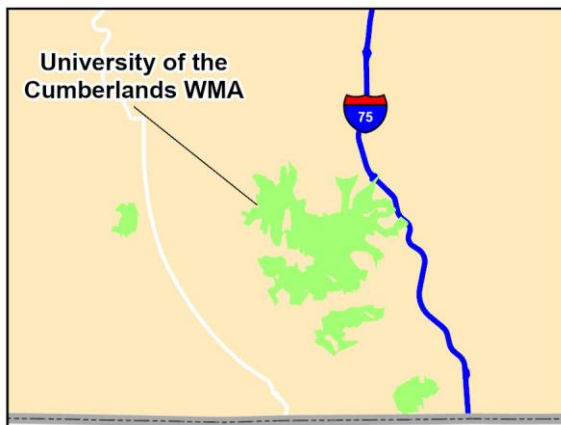
Map prepared by Kentucky Department of Fish & Wildlife Resources (KDFWR). Although KDFWR strives for accuracy, data used to create this map are from a variety of sources and dates; as such, KDFWR makes no representations regarding the accuracy or fitness for use of the information furnished herein.

# University of the Cumberlands WMA Information

## Public Hunting Area Location



## Regional Locator



## Directions & Description:

To access the area, travel 3.5 miles west from Williamsburg on KY-92 to the WMA entrance sign. Turn left and travel 1.2 miles to the WMA parking lot.

This WMA, located in Whitley and McCreary counties, consists of mostly forested habitat with moderate to steep terrain. Portions of the WMA does have a history of surface mining. Reclaimed, early successional areas can be found on this property. The WMA offers opportunities for small and big game species.

## Online Resources

Public Hunting Area users must abide by the Kentucky hunting, trapping, and fishing regulations. It is incumbent on persons using Public Hunting Areas to become familiar with these regulations. Kentucky Department of Fish & Wildlife Resources provides these regulations on our Web site at [fw.ky.gov](http://fw.ky.gov) or by calling 1-800-858-1549.

## WMA Overview

**Location & Size:** Whitley & McCreary County, 10,273 acres

**Contact** (270) 283-0244 or (606) 344-0585

**Elevation** minimum 940 feet, maximum 2,120 feet.

**Area Habitat** mostly Deciduous Forest: open land 9%, Forest 91%, Hay / Pasture 0%.

**Entrance GPS coordinates:** Latitude 36.7034, Longitude -84.1999

# Wildlife Management Area Map Notes & Legend

## NOTE TO MAP USERS:

For most WMA maps the landscape is depicted using a combination of elevation contours, hillshading and a green tint indicating woodland areas that is derived from satellite imagery. On WMAs that are relatively small or have a history of surface mining aerial photography is used.

## WMA Map Legend

	WMA Office		WMA Boundary		Populated Place
	Information Kiosk		Aerial imagery		Kentucky Boundary
	Check station		Other Public Hunting Areas		Interstate Highway
	Mobility-impaired Hunting Blind		Area Off Limits		Kentucky Parkway
	Trailhead		No Hunting		U.S. Highway
	Horseback Trailhead		Seasonally Restricted Access		State Highway
	Parking Lot		Mobility Impaired Hunting Area		Local Road
	Picnic Area		Primitive Hunting Only		Forest Service Road
	Restrooms		Open Water		Active Railroad
	Wildlife Viewing Site		Wetland		Abandoned Railroad
	Interpretive Site		Woodland		Federal Recreation Trail
	Retriever Training Site				WMA Road
	Gate				WMA Foot Trail
	Campground				WMA Horse Trail
	Cemetery				Gas Pipeline
	Corps of Engineers Office				Powerline
	Waterfowl Blind				Rivers and Streams
	Any Boat				Dam
	Bank Access				Trout Waters
	Carrydown Only				Elevation Contour
	Fishing Pier				
	Small Boat Only				
	Shooting Range				
	State Park Office				